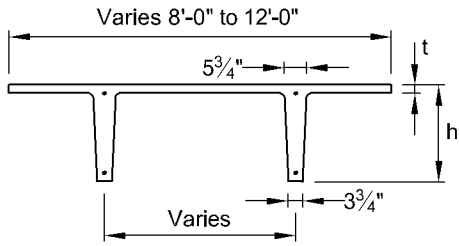


DOUBLE TEE WALL PANELS

Figure 2.7.3 Partial interaction curves for prestressed double tee wall panels



Mark	h, in.	t, in.	No. Strd.	ϕP_c	Full Interaction Curve Data					
					Partially Developed Strand Force			Fully Developed Strand Force		
					ϕP_{nb}	ϕM_{nb}	ϕM_c	ϕP_{nb}	ϕM_{nb}	ϕM_c
8DT16	16	2	4	871	547	164	57	513	179	95
8DT18	17	3	4	1136	775	196	64	743	213	107
10DT16	16	2	4	1003	667	175	57	634	192	96
10DT17	17	3	4	1335	962	208	64	929	226	108
12DT16	16	2	4	1136	789	185	57	757	202	96
12DT17	17	3	4	1534	1151	217	65	1118	236	108

$f'_c = 5000$ psi, Normal weight
 Strand = 1/2 in. Diameter
 $f_{pu} = 270$ ksi

